

Upgrade Firmware for BD970

1. Preparation

Hardware: Computer with Serial Port, Receiver Data Cable

Software: sscom32E software, WFC-BD9xx software

Notice:

a. About WFC-BD9xx-V234 software downloading, please visit below website, named as "BD9xx Win Flash"

<http://www.trimble.com/gnss-inertial/bd970.aspx?dtID=support>

b. Receiver power supply should be sufficient.

2. Operation

- Install "WFC-BD9xx" software on your PC.
- Switch on receiver; connect to computer through serial port.
- Run "sscom32E" software, click **Open Com** to connect to your receiver; Mark "Send HEX", Input order "24 24 56 53 01 00 55 51 0d 0a" as figure1, Baud rate chooses 19200, then click **SEND** to send information to receiver.

After sending this order, receiver would make sound: Update OEM.



Figure 1

Then click **CloseCom** or shut down the program, otherwise this serial port will be occupied.

- d. Choose your serial port and click **Next >** as figure 2.



Figure 2

- e. Choose "Load GPS software", click **Next >** as figure 3.

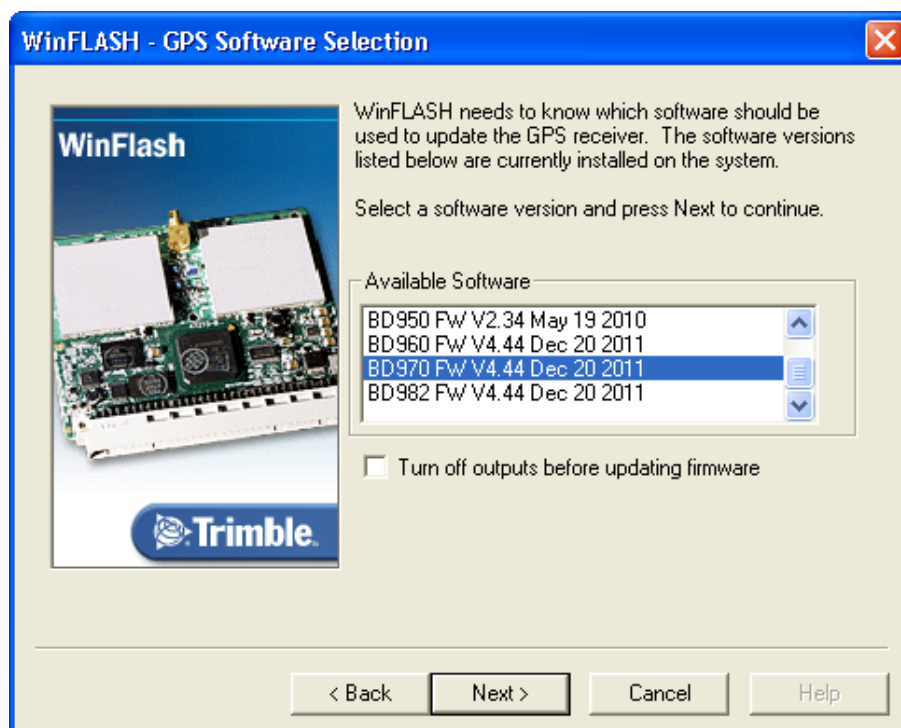



Figure 3

- f. Choose "BD970 FW", also click  figure 4.

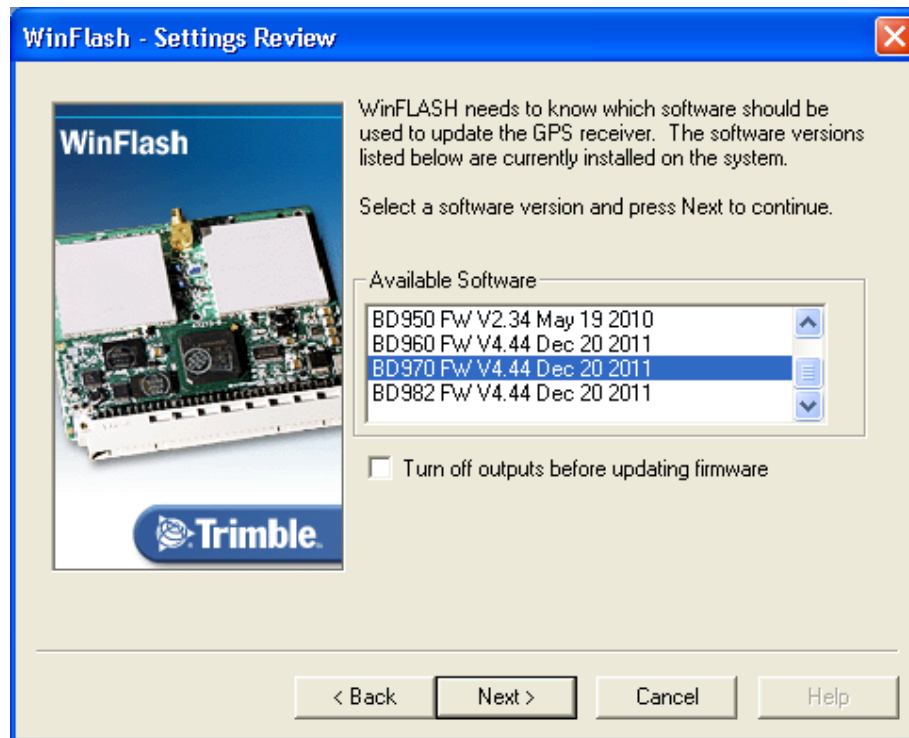



Figure 4

- g. Click , then wait for updating finished as figure 5 & 6.

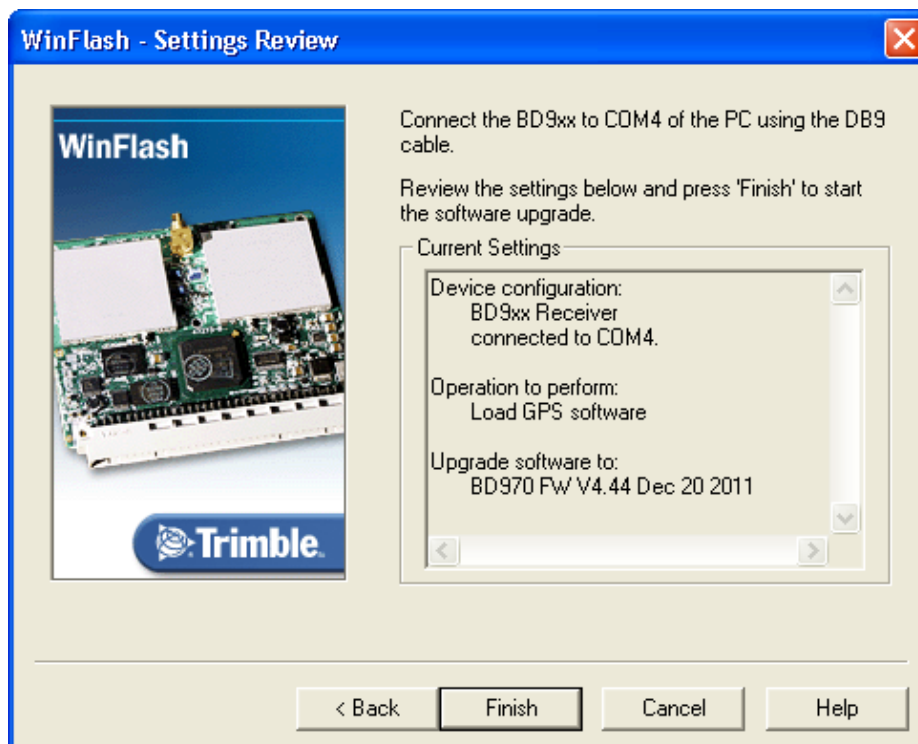


Figure 5

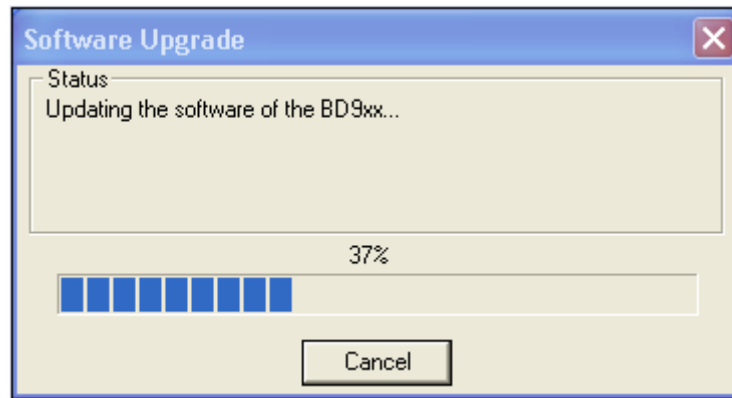


Figure 6

Notice: After finished updating firmware, Please restart the receiver.